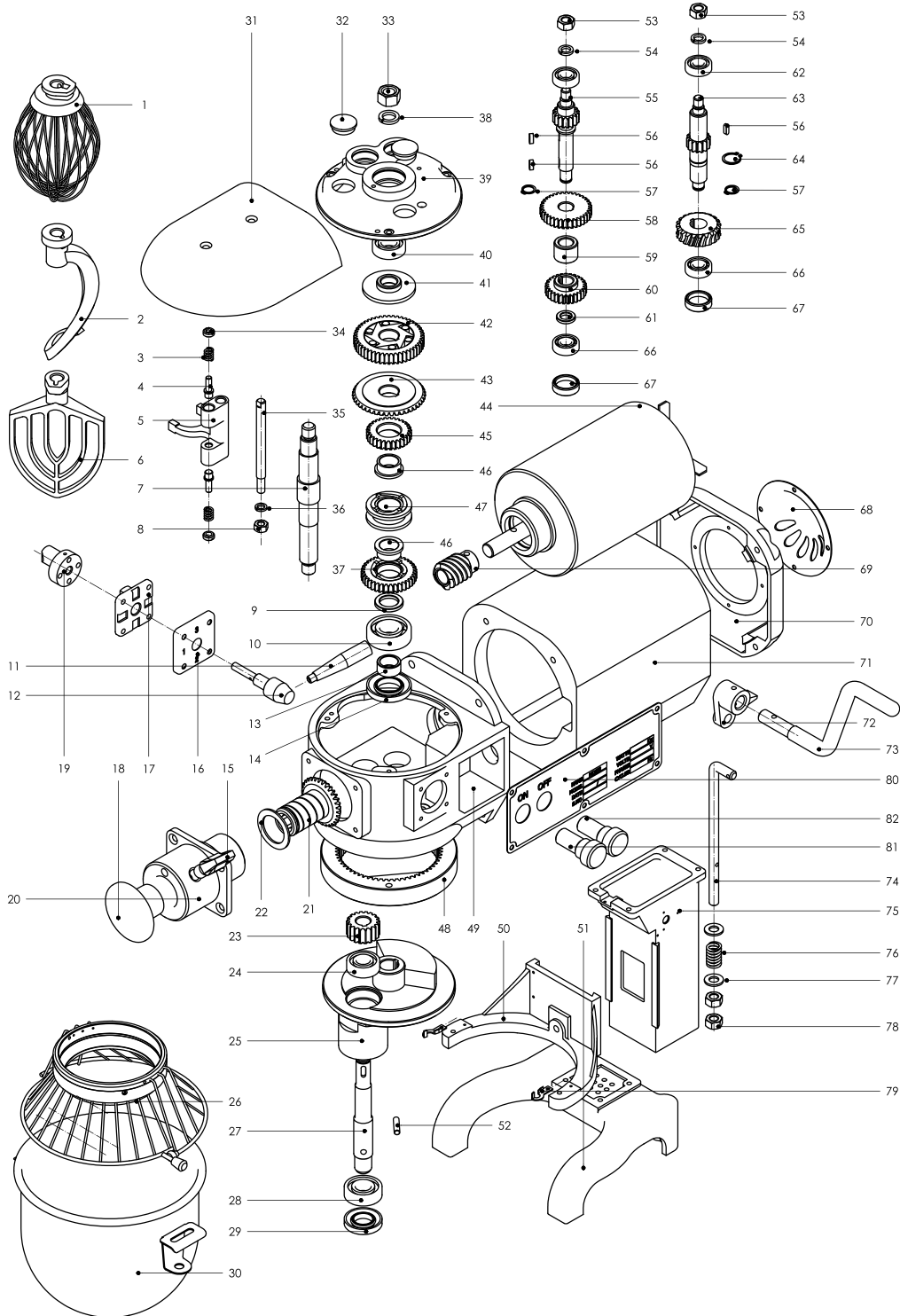


# Parts Breakdown

Model MX-CN-0010-G 20467



# Parts Breakdown

## Model MX-CN-0010-G 20467

Item No.	Description	Position	Item No.	Description	Position	Item No.	Description	Position
25061	Wire Whip for 20467	1	25714	Nut 14x1.5 for 20467	33	25124	Ring for 20467	61
25062	Hook for 20467	2	25095	Declutch Shift Shaft for 20467	35	25125	Bearing for 20467	62
25065	Shifting Yoke for 20467	3-5, 34	25096	Spring Washer for 20467	36	25126	Shaft Worm Gear for 20467	63
25066	Flat Beater for 20467	6	25097	Gear for 20467	37	24915	Circlips for Shaft for 20467	64
25067	Gear (comes with Elastic Ring) for 20467	7	24893	Spring Washers for 20467	38	25128	Worm Gear for 20467	65
25068	Nut for 20467	8	25099	Support for 20467	39	25125	Bearing for 20467	66
25069	Lining Ring for 20467	9	25100	Bearing for 20467	40	25131	Back Guard for 20467	68
25070	Bearing for 20467	10	25101	Spindle Boring Cover for 20467	41	25132	Worm Pole for 20467	69
24867	Speed Handle for 20467	11	25102	Big Gear for 20467	42-1	25133	Back Cover for 20467	70
25072	Handle Shaft for 20467	12	25103	Gear for 20467	42-2	25134	Motor Box for 20467	71
25073	Bushing for 20467	13	25104	Roller for 20467	42-3	25135	Crank Lever for 20467	72
25074	Oil Seal for 20467	14	24880	Spring for 20467	42-4	25136	Handle for 20467	73
24870	Tighten Handle for 20467	15	25106	Taper Gear Wheel 1 for 20467	43	25137	Connecting Rod for 20467	74
25076	Block Handle for 20467	16	25107	Motor for 20467	44	25138	Stand Column for 20467	75
24865	Handle Shifter Cover for 20467	17	25108	Combination of Gear for 20467	45	25139	Spring for 20467	76
24967	Plug for 20467	18	25109	Bushing for 20467	46	24939	Spacer for 20467	77
25079	Cam-Gear Shifter for 20467	19	25110	Claw Type Clutch for 20467	47	24883	Nut for 20467	78
25080	Attachment Hub for 20467	20	25111	Inner Gear for 20467	48	24908	Press Board for 20467	79
25081	Taper Gear Wheel 1 for 20467	21	25112	Gear Box for 20467	49	25143	Brand for 20467	80
25082	Circlips for Shaft for 20467	22	25113	Support for 20467	50	24922	Green Button Round for 20467	81
25083	Planetary Gear for 20467	23	25114	Base for 20467	51	24924	Red Button Round without Timer for 20467	82
25084	Bearing for 20467	24	25115	Retainer-Spring for 20467	52	25146	Run Capacitor 20 UF for 20467	
25085	Operating Shelf for 20467	25	24911	Nut for 20467	53	25147	Start Capacitor 100 UF for 20467	
25086	Safety Guard for 20467	26	24882	Ring for 20467	54	24944	Contact-Relay for 20467	
25087	Working Shaft for 20467	27	25118	Gear Shaft for 20467	55	25149	Power Cord for 20467	
25006	Bearing for 20467	28	25119	Key for 20467	56	25150	Reset-Overload Switch for 20467	
25089	Oil Seal for 20467	29	24898	Circlips for Shaft for 20467	57	25151	Safety Guard-Bowl Micro Switch for 20467	
25090	Bowl for 20467	30	25121	Gear for 20467	58	25152	Timer Knob for 20467	
25091	Cover for 20467	31	25122	Bushing for 20467	59			
24985	Plug Cover for 20467	32	25123	Gear for 20467	60			